




BOUTIQUE. CO

WATLING
STREET

BANK

THE BOUTIQUE COLLECTION

73 Watling Street, London, EC4M 9BJ



WELCOME TO WATLING STREET

73 Watling Street is a workplace gem in the true heart of the City of London. Situated on a narrow thoroughfare that likely dates back as far as the 9th century, it's surrounded by period buildings from the 17th to the 19th century.

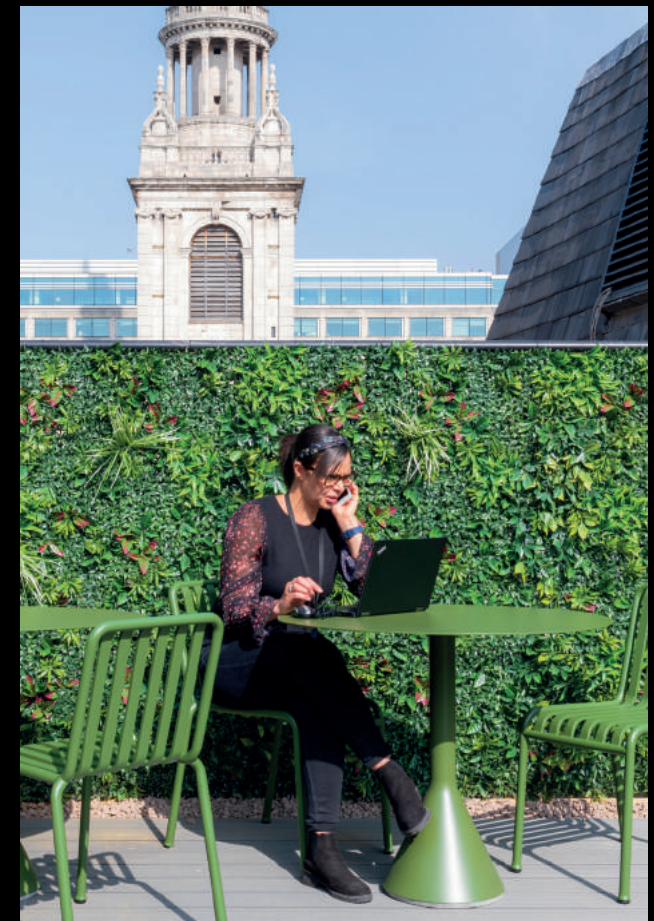
Featuring almost 10,000sqft of flexible private office space spread across five floors, all refurbished to the highest standard and designed with sustainability and wellbeing in mind, it's the perfect workplace for businesses wanting something more from their space in the City. And, literally and metaphorically topping it all off, there's a rooftop terrace to enjoy when you need a break from your desk.

Watling Street has seen centuries of London's progress unfold – as one of the narrow streets that's likely to have made up part of the original 9th century Saxon plan of the city. It was famous for its central involvement in the shoe-making industry throughout the medieval period, when it was part of the Ward of Cordwainer, and there's a statue commemorating this part of its history on the street.

It's also just a few doors down from Ye Olde Watling, a pub which, after having burned down in the Great Fire of London, was rebuilt by Sir Christopher Wren and was the place where he drew up plans for St Paul's Cathedral.

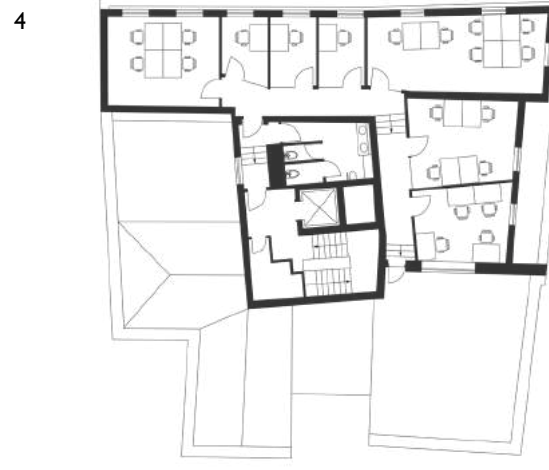
Speaking of the cathedral, according to former Poet Laureate John Betjeman, Watling Street has the finest view of St Paul's domes, which rise higher and higher above the street's buildings as you walk towards it. You can also see St Paul's from the rooftop terrace of 73 Watling Street, which sits atop five floors of office space. Available on highly flexible terms and all coming fully-furnished and unbranded, it's the perfect option for businesses looking for a new way to work in the City.

“
73 Watling Street offers an unbeatable City location and a unique workspace solution in a boring City office market.
”



THE BOUTIQUE COLLECTION

The Workplace & Floor Plans





THE BOUTIQUE COLLECTION


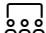




Features and Facilities



FEATURES AND FACILITIES

- Reception services
- Mailing and trading address
- 24-hour access
- Dog-friendly
- Part of the Boutique Members Club
- Breakout areas
- Roof terrace
- Prime location
- Passenger lift
- Barista-style coffee
- Showers
- AC and fresh airflow
- Hand sanitising stations and daily cleaning
- Wifi
- Access to business grade fibre-optic broadband
- Rent, business rates, utilities, service charge and building insurance inclusive
- Fully furnished
- High ceilings and excellent natural light
- TV installed into every private office

CHOOSE YOUR WORKSPACE

	Private offices A range of fully furnished and unbranded office space options spread across five floors.
	Meeting room Meeting room access available, perfect for presentations, pitches, video-conferencing and zoom calls.
	Memberships Part of The Boutique Members Club providing access to coworking lounges in 14 other locations in London and beyond.
	Virtual offices Use of this desired London trading address as well as an (020) London number in order to give your clients the best first impression for your business.
 	Memberships & Virtual office Enjoy a professional trading address with the flexibility to work in any of our Boutique Members Club lounges.



THE BOUTIQUE COLLECTION

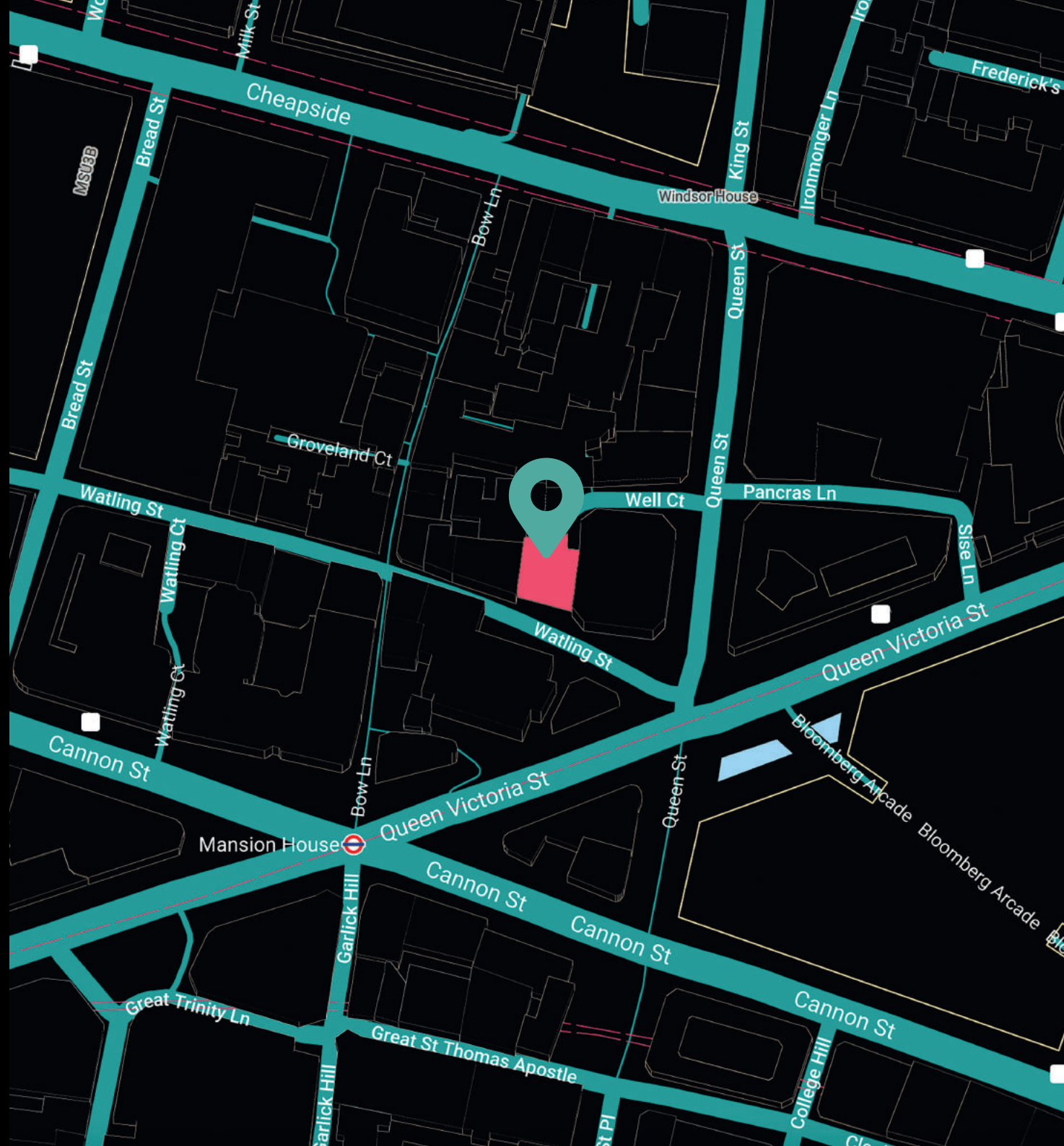
Map location

LOCATION

73 WATLING STREET
LONDON
EC4M 9BJ

Our Watling Street workplace neighbours a famous Butchers in the City called Porterford Butchers, meaning you can beat the long queue at lunchtime.

Bank is the closest underground station, offering access to both the Central and Northern lines, and nearby Mansion House and Cannon Street stations offer access to Circle and District lines.



THE BOUTIQUE COLLECTION

Things to do nearby



THINGS TO DO NEARBY

One of the best things about being based at 73 Watling Street is the location. Yes all spots in the City are great but as our road is pedestrianised it means people spill onto the street creating a daily buzz and atmosphere like no other part of the City. The road is lined with pubs, restaurants, delis and bars and there is a real sense of community and fun.

SHOP AWAY

Situated in between the One New Change development and Bloomberg development, restaurants and shopping is available in abundance.

WE RECOMMEND



The Ned



The Ivy Asia



BOUTIQUE. CO

WATLING STREET

BANK

GET IN TOUCH WITH US:

☎ 020 3405 7000

✉ enquiries@boutique.co

FOLLOW US:



[@boutiqueworkco](https://www.instagram.com/boutiqueworkco)

www.boutique.co

